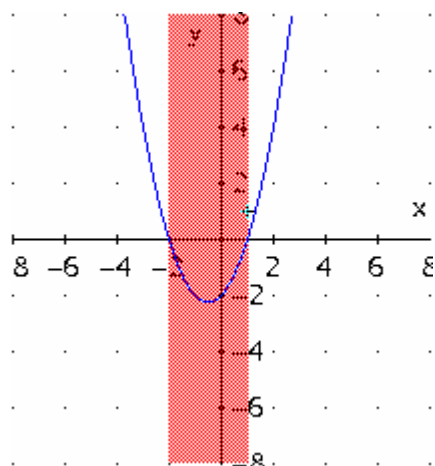


Řešte početně i graficky nerovnici:

$$x^2 + x - 2 \leq 0$$

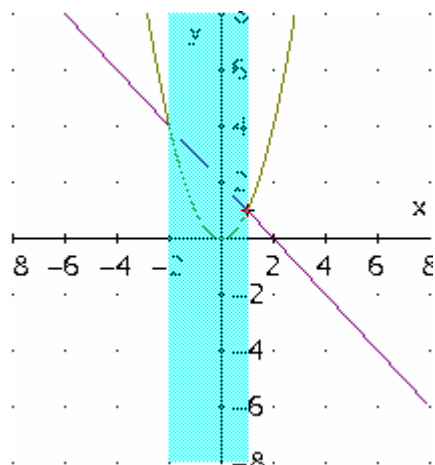
$$\text{SOLVE}(x^2 + x - 2 \leq 0, x, \text{Real})$$

$$-2 \leq x \leq 1$$



$$(x^2 + x - 2 \leq 0) \wedge x + 2$$

$$x \leq 2 - x$$



$$(x - 1) \cdot (x + 2) \leq 0$$